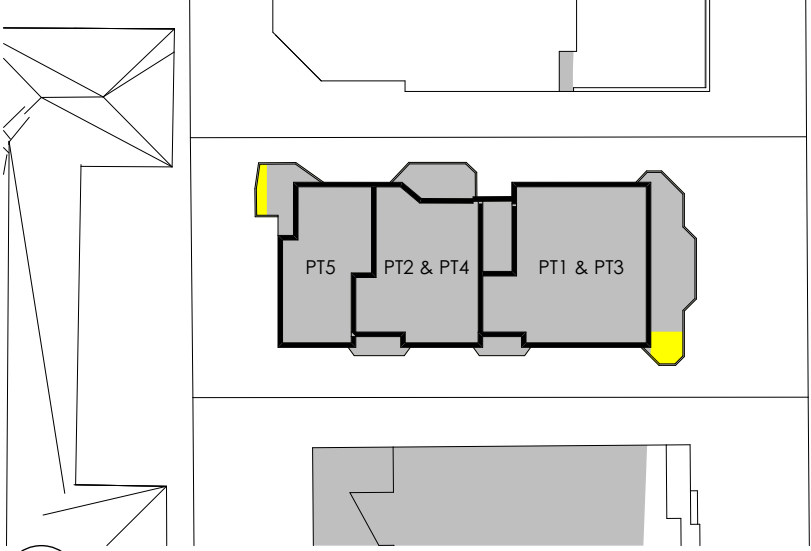
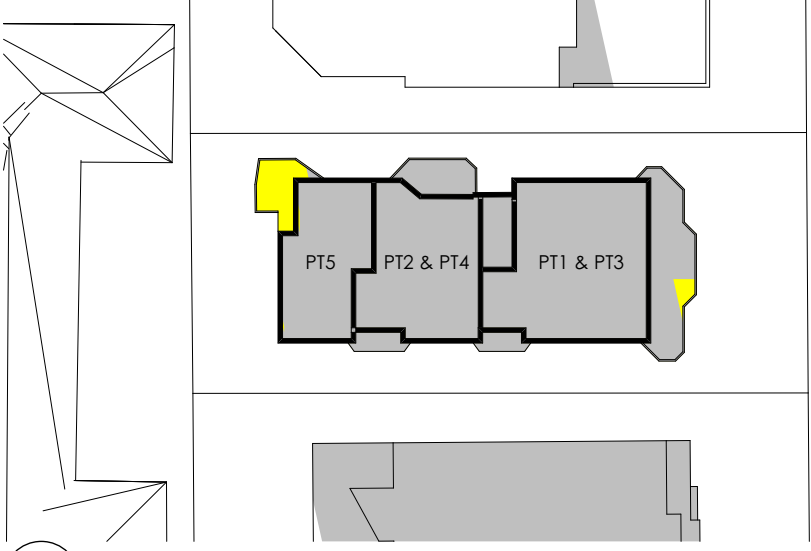


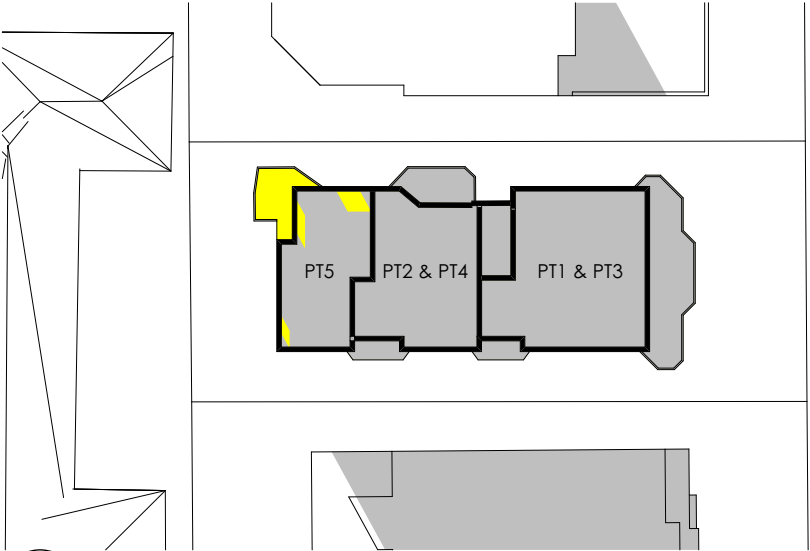
**1** 15 PARK AVENUE - 21 JUNE: 9AM  
- Scale 1:500



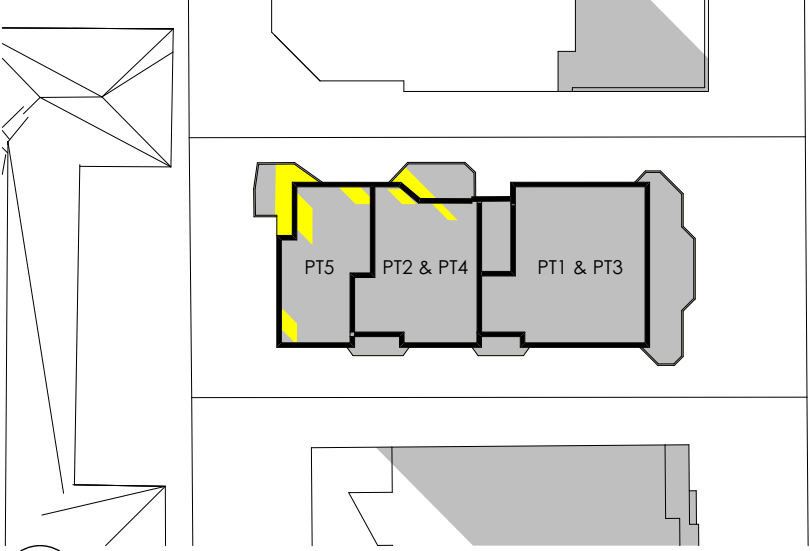
**2** 15 PARK AVENUE - 21 JUNE: 10AM  
- Scale 1:500



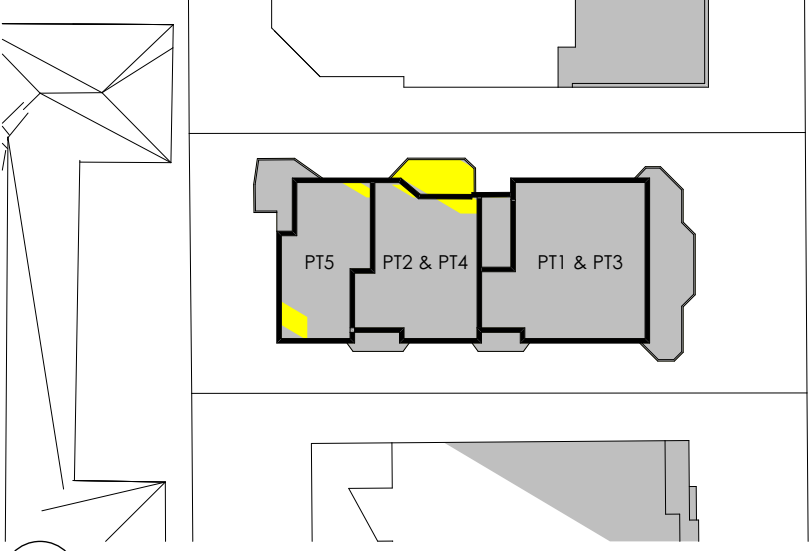
**3** 15 PARK AVENUE - 21 JUNE: 11AM  
- Scale 1:500



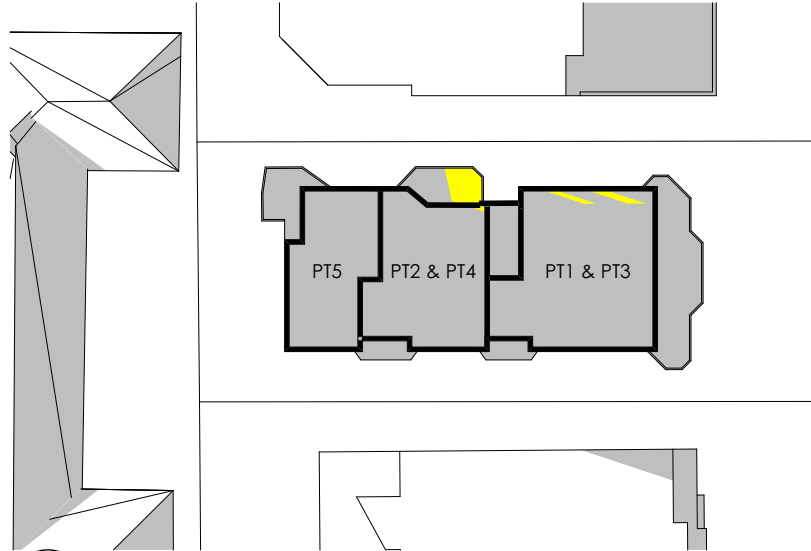
**4** 15 PARK AVENUE - 21 JUNE: 12PM  
- Scale 1:500



**5** 15 PARK AVENUE - 21 JUNE: 1PM  
- Scale 1:500



**6** 15 PARK AVENUE - 21 JUNE: 2PM  
- Scale 1:500



**7** 15 PARK AVENUE - 21 JUNE: 3PM  
- Scale 1:500

**SOLAR ACCESS SCHEDULE - 21 JUNE**

PT1: 3PM  
PT2: 1PM TO 3PM  
PT3: 3PM  
PT4: 1PM TO 3PM  
PT5: 12PM TO 2PM

**3 OUT OF 5 UNITS (60%) MEETS ADG SOLAR ACCESS REQUIREMENTS OF 2 HOURS MINIMUM DURING THE MIDDLE OF WINTER.**